

PLATEABLE CRYOPRESERVED FEMALE HUMAN HEPATOCYTES
PRODUCT NUMBER: F00995-P

Lot Number: TNX

Storage Conditions: below -150°C (vapour phase of liquid nitrogen freezer)

Viability and Yield:

≥70% post-thaw viability by trypan blue exclusion
≥ 5 million viable cells

Results

86 %
6.71 million viable cells

Lot Characterization Results:

| <u>Assay (rate of formation)</u> | | <u>Results</u> (pmol/min/million cells) | <u>Assay (rate of formation)</u> | | <u>Results</u> (pmol/min/million cells) |
|----------------------------------|-------------------------------|--|----------------------------------|-----------------------------|--|
| ECOD: | 7-HC and metabolites (total) | 93.7 | CYP 2C9: | 4'-methylhydroxytolbutamide | 44.7 |
| UGT: | 7-hydroxycoumarin glucuronide | 521 | CYP 2C19: | 4'-hydroxymephenytoin | BQL |
| ST: | 7-hydroxycoumarin sulfate | 32.0 | CYP 2D6: | dextrorphan | 18.3 |
| CYP 1A2: | acetaminophen | 17.1 | CYP 2E1: | 6-hydroxychlorzoxazone | 37.6 |
| CYP 2A6: | 7-HC and metabolites (total) | 132 | CYP 3A4: | 6β-hydroxytestosterone | 43.5 |
| CYP 2B6: | hydroxybupropion | 28.3 | CYP 3A4: | 1-hydroxymidazolam | 27.6 |
| CYP 2C8: | desethylamodiaquine | 161 | | | |

genotyping data will be provided on the BioreclamationIVT website as the data are made available

Plateability, Induction and Confluence:

≥ 0.1 OD MTT value at day 5

≥70% confluent monolayer at day 5

Results

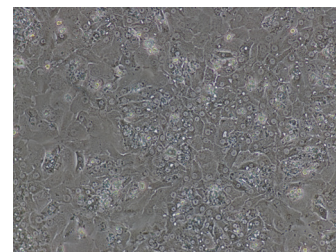
0.345 OD
97 %
7.56
1.59 pmol/min/million cells
28.9
8.58
0.52 pmol/min/million cells
14.6
27.3
3.75 pmol/min/million cells
175

Donor Demographics, as reported to BioreclamationIVT:

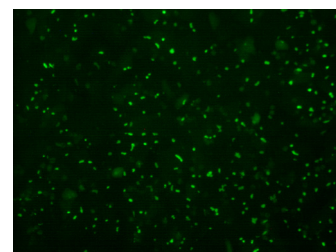
*NR = Not Reported

| | | | | | | | | | | |
|----------------|----------|---|---------|------------|-------|------------|---------|-------------|---------|--------------|
| Physical | Age: | 8mo | Gender: | F | Race: | C | Height: | 58cm | Weight: | 14 lb |
| Serology | EBV: | Neg | RPR: | Neg | CMV: | Neg | HEP C: | Neg | HEP B: | Neg |
| | HIV: | Neg | | | | | | | | |
| Medical | COD: | Premature - 25wks gestation - failure to thrive; death by natural causes. | | | | | | | | |
| | General: | Respiratory - complications of severe prematurity, pulmonary HTN | | | | | | | | |
| | Meds: | none noted | | | | | | | | |
| Social History | Alcohol: | None | | | | | | | | |
| | Tobacco: | None | | | | | | | | |
| | Drugs: | None | | | | | | | | |

Confluence – Day 5



CDFDA Staining – Day 5



*Updated to include induction and mRNA results.

Caution

This product was prepared from fresh human tissue. Treat all products containing human-derived materials as potentially infectious, as no known test methods can offer assurance that products derived from human tissues will not transmit infectious agents.

This product is for research use only. Do not use in animals or humans. This product has not been approved for any diagnostic or clinical procedures.